



**ENPAR STEELS PVT. LTD.**

# COMPANY PROFILE



**AUTHORIZED SERVICE PARTNER**

# ABOUT US



Established in 2010, Enpar Steels are a leading supplier of CRCA, GPRS, GPSP, and Galvalume products. Providing high-quality, reasonably priced steel goods and services is the ultimate goal of our company, along with coming up with creative ways to satisfy the client's manufacturing requirements. In order to make the process of acquiring high-quality steel simpler, we have established our selves as one of their biggest stockists of JSW Steel. We also offer De-coiling, cut to length, slitting, shearing & re-shearing, PVC lamination and specialized services including sheet form and blanking sizes. Over Last 13 years we have made rapid progress due to our consistent quality, competitive pricing & customer trust. Now we are supplying in major parts of Maharashtra, Gujarat and other states with an annual sales quantity of more than 20000 MT. We have our headquarters based at Andheri, Mumbai and soon coming up with our own service centre and warehouse at Wada District.

# COMPANY VISION, MISSION & QUALITY POLICY

---



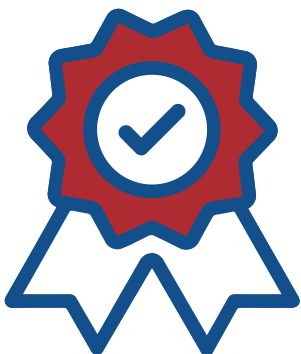
## **Vision**

Our ambition is to become a major player in the steel goods that we can offer on a global scale, setting standards for reliability, quality, and service that will benefit all of our clients, creditors, and workers by fostering growth.



## **Mission**

Our mission is to provide high quality steel products and services that meet the needs of our customers while contributing to the development of a sustainable future. We strive to maximize our value through innovation, cost efficiency, and relentless customer service. Furthermore, we are committed to creating a safe and healthy workplace for employees and reducing our environmental footprint.



## **Quality Policy**

We adhere to a stringent Quality system and make sure that every product we market fits the needs and expectations of our customers at a fair price, fosters customer trust and loyalty, and results in complete customer satisfaction. We constantly monitor our suppliers to ensure that they are not supplying subpar materials to our customers.

# COMPETITIVE ADVANTAGES

---

01

**Steel industry knowledge and experience**

02

**Reasonably priced goods**

03

**Logistics**

04

**Deliveries on time**

05

**A well-known brand among industry.**

06

**Dimension accuracy and excellent product quality**

07

**High quantities of stock and inventory**

08

**Strong emphasis on service and product quality**

09

**Relentless pursuit of product, process, and performance optimization**

10

**Excellent client responsiveness; Service Center and Warehouse**

# PRODUCTS

## COATED PRODUCTS

### Galvanised Products

Regular Spangle (GPRS) & Zero Spangle (GPSP – Skin passed)

#### Grades & Specification:

Material conforming to IS 277:2008

#### Grades available:

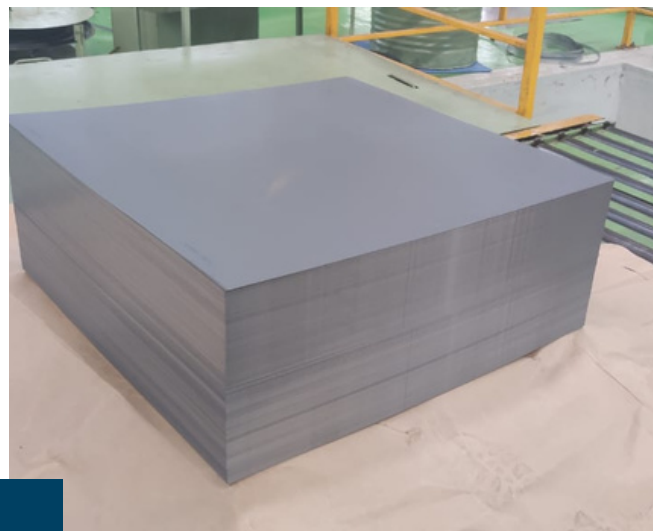
DQ, DDQ, EDDQ, IF, High strength steel

#### Coating:

120 GSM, 180 GSM & 275 GSM

#### Applications:

Automobiles, Appliances, Panel, General Engineering & Construction



# PRODUCTS

## COATED PRODUCTS

### **Bare Galvalume**

Galvalume is generally used for exterior applications because of its higher life expectancy. Galvalume is a much longer-lasting material, with a lifespan of about twice that of galvanized steel.

#### **Grades & specification:**

Material conforming to IS 15961 & ASTM A792

#### **Grades available:**

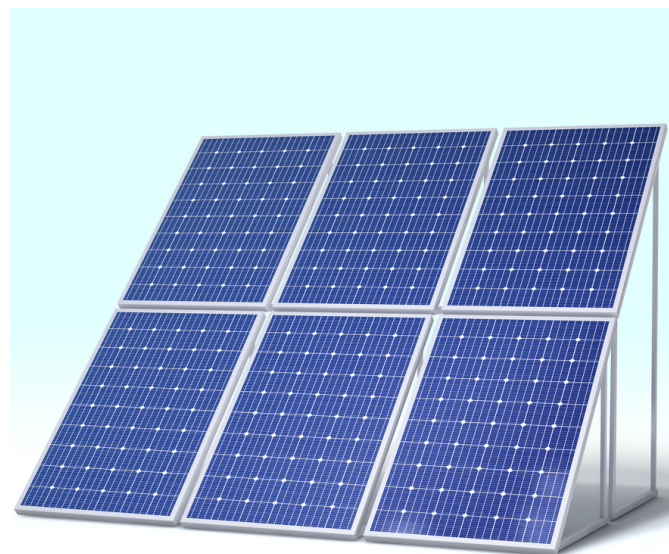
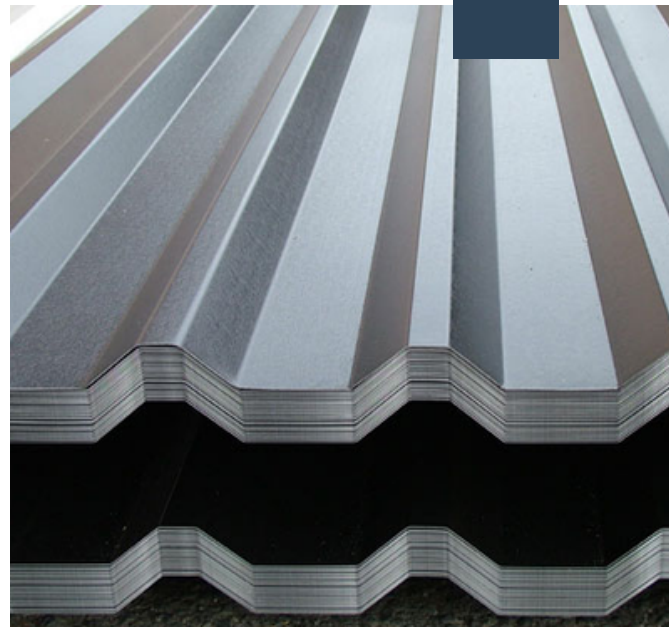
CQ & High strength steel

#### **Coating:**

AZ70, AZ150 & AZ200

#### **Applications:**

Roofing-cladding, Ducting, Sandwich panels & Solar Panel.





# PRODUCTS

## NON-COATED PRODUCTS

### Cold Rolled Steel

#### **CRCA:**

Cold Rolled Closed  
Annealed/Continuous  
Annealed

#### **Grades & Specification:**

Material conforming to IS 513

#### **Grades available:**

CQ, DQ, DDQ & EDDQ

#### **Applications:**

Automobiles, Appliances,  
Engineering & Fabrication,  
Drums & barrels, Electrical  
Panels, Furniture etc



# SERVICE CENTRE

For de-coiling, cut to length, slitting, shearing & re-shearing, and PVC lamination, we have exclusive process contracts and strategic alliances with advanced service centers headquartered in the Pune & Mangalore region. Packing & Logistics services are also provided.



**AUTHORIZED SERVICE PARTNER**







# THANK YOU



Phone call  
**+91 8108030603, 022- 66610116**



Email Address  
**admin@enparsteels.com**



Website  
**www.enparsteels.com**



Office Address  
**268/B Wing, Sanjay Building No 5, Akshay Mittal  
Industrial Co-op Hsg. Ltd, Andheri Kurla Road, Andheri  
(E), Mumbai- 400059**